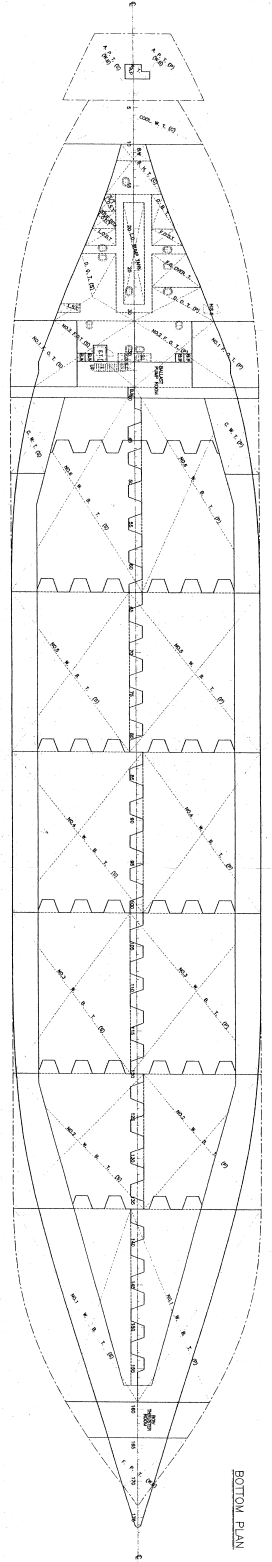
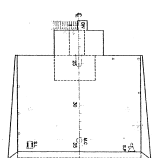
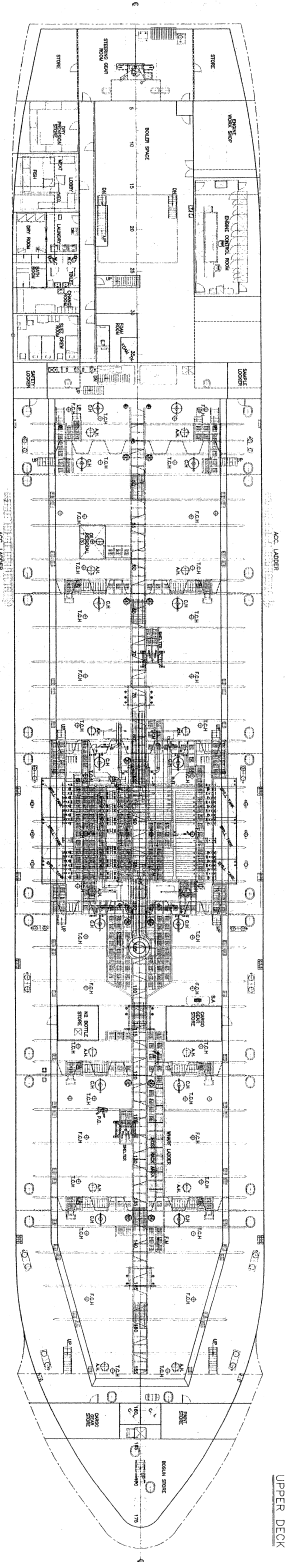
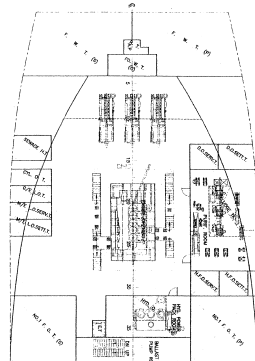
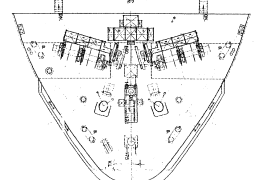
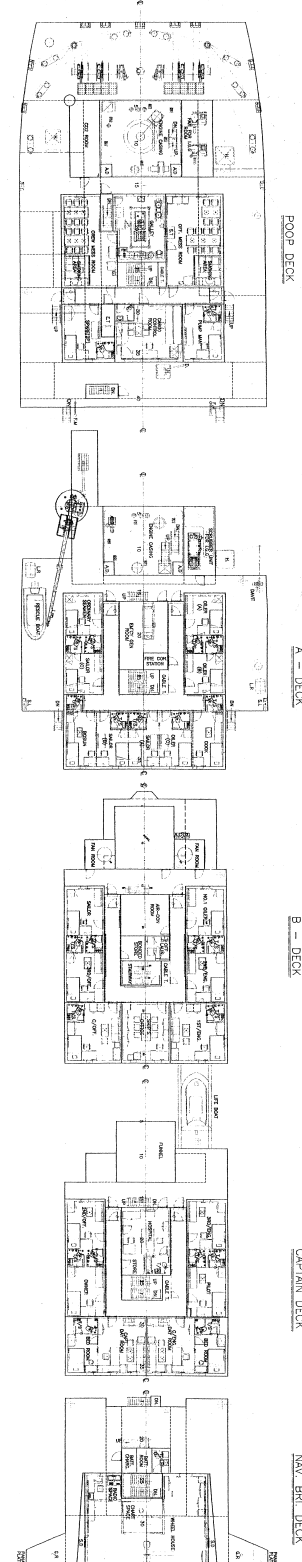
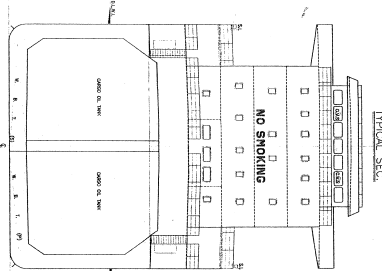
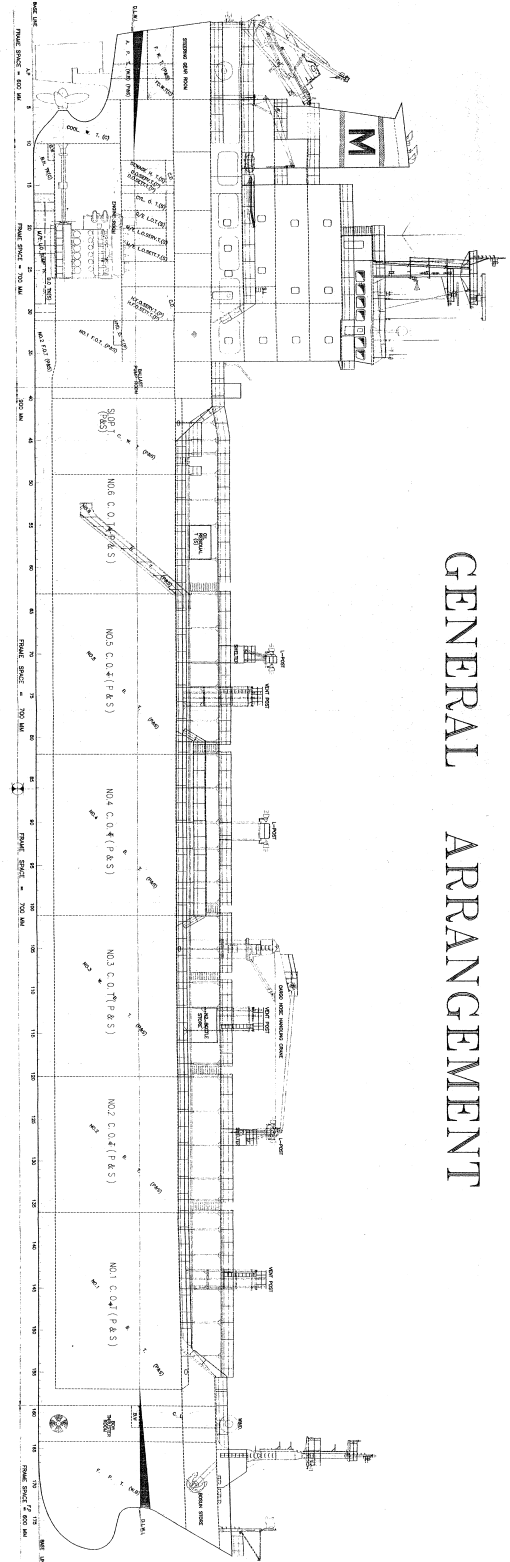


# GENERAL ARRANGEMENT



## PRINCIPAL PARTICULARS

LENGTH	127.20 M
BREADTH	18.00 M
DRAUGHT	11.20 M
DISPLACEMENT (LOADING)	8,700 TON
DISPLACEMENT (SCANTLING)	12,800 TON
GROSS TONNAGE	6,400 TON
NET TONNAGE	4,440 TON
STEEL (SAVED)	13,500 TON
COMPONENTS	2,400 TON
CLASS	AMS A201, VES.

**FINAL DWG**  
**NEW RANGER**

## GENERAL ARRANGEMENT

OWNER	MADISON MARITIME MANAGEMENT S.A.	PROJECT NO.	SH-104
DESIGNER	SAHOO SHIPBUILDING CO., LTD.	DATE	2007.08
BUILDER	SAHOO SHIPBUILDING CO., LTD.	SCALE	1:200
DESIGNER	SAHOO SHIPBUILDING CO., LTD.	CLASS	AMS
DESIGNER	SAHOO SHIPBUILDING CO., LTD.	DWG. NO.	B-101-00
DESIGNER	SAHOO SHIPBUILDING CO., LTD.	REG.	△

DATE	REV.	DESCRIPTION	REMARK
2006.10.	△	1. Designed by S&S Design Team.	
2007.08		FINAL DRAWING FOR SH-104	

## BIBLIOGRAPHY